

LMCS – Safe Work Procedure

DRUM SANDER



DO NOT use this equipment unless you have been instructed in its safe use and operation and have passed the safety accreditation

PERSONAL PROTECTIVE EQUIPMENT

- Safety glasses must be worn at all times in work areas.
- Long and loose hair must be contained.
- Hearing protection must be worn.
- Sturdy footwear must be worn at all times in work areas.
- Close fitting/protective clothing must be worn.
- Rings and jewellery must not be worn.

PRE-OPERATIONAL SAFETY CHECKS

- ✓ Locate and ensure you are familiar with all machine operations and controls and emergency stops.
- ✓ Ensure the machine, power cords etc. are in safe working condition.
- ✓ Check workspaces and walkways to ensure no slip/trip hazards are present and that no one will be harmed by you operating the machine.
- ✓ Ensure all guards are fitted, secure and functional. Do not operate if guards are missing or faulty.
- ✓ Ensure table and work area is clear of all tools, off-cut timber and sawdust.
- ✓ Check that you are feeding in from the correct side.
- ✓ Timber MUST BE straight, and thickened.
- ✓ Slide in the piece of timber with the machine in the off position. Whilst looking along the top of the timber wind the table up until a line of light is barely visible.

OPERATIONAL SAFETY CHECKS

- ✓ Plug in the machine.
- ✓ Allow the cutter to obtain maximum speed before making a cut.

ENDING OPERATIONS AND CLEANING UP

- ✓ Switch off the machine when work completed.
- ✓ Leave the machine in a safe, clean and tidy state.
- ✓ Return the height adjustment lever to the supervisor.

POTENTIAL HAZARDS AND INJURIES

- Kickback: wood may catch or jam and be flung back violently.
- Airborne dust.
- Eye and hearing injuries.
- Contact with sanding medium at point of operation, potentially severe injuries.

DON'Ts

- ✗ Do not use operate equipment without wearing appropriate PPE.
- ✗ Do not use faulty equipment. Immediately report suspect equipment.
- ✗ Do not surface irregular stock, branches or wood with embedded nails or screws.
- ✗ Do not put your hands any closer than 150 mm from the cutter head when it is rotating.
- ✗ Never leave the machine running unattended.
- ✗ Do not use heavy pressure to a point the machine slows down audibly at a starkly reduced pitch.

This SWP does not necessarily cover all possible hazards associated with this equipment and should be used in conjunction with other references. It is designed as a guide to be used to compliment training and as a reminder to users prior to equipment use.

This information is modified from Frontline Safety www.frontline.edu.au

Issued	Issued For	Prepared	Checked	Approved	Rev.
25.09.2022	Endorsement by Safety Com	A Oldham C de Groot			01

Safe Operating Procedures – DRUM SANDER

BACKGROUND INFORMATION & READING

This video will assist you in following safe work practices:

[Axminster Trade AT635DS Drum Sander - Product Overview - Bing video](#)

Videos need to be viewed prior to arranging an assessment.

FITNESS TO OPERATE DRUM SANDER

Members are expected to refrain from working on these power tools and machines if they acknowledge their own level of physical ability inhibits them from doing so safely.

However, if assessors determine that a member has some level of physical impairment that makes it unsafe to use machines, they will have no option other than to assess the member as not having the capacity to do so safely.

You can still do your projects, just mark the timber and ask another shed member to cut/machine the timber for you. You are not compelled to cut the timber yourself and in this environment, you will easily find others that are more than able and willing to do the cutting for you.

GENERAL RULES & TIPS

- YOU MUST DISCUSS YOUR OPERATION WITH THE SUPERVISOR WHOM WILL ISSUE THE HEIGHT ADJUSTMENT LEVER, (if agreeable to your proposal). Once completed this LEVER MUST BE RETURNED TO the supervisor.
- If recycled material is used, all timber MUST be visually checked for nails and screws. After that the timber MUST also be checked with the metal detector. Processing CCA treated timber is not permitted.
- Timber with paint, oils or varnishes must not be run through the sanding equipment
- ALL PIECES OF TIMBER OF A RUN MUST BE FLAT, STRAIGHT AND OF **EQUAL THICKNESS**. The consistency of the thickness must be verified at along all sides of the timber with a tape measurer, calliper or ruler.
- If the piece is wider than 300 mm or end grain then the piece of timber cannot be thickened in the thickener. That leaves two possibilities to prepare the piece for sanding: a) set up a jig and use a router to make it flat and subsequently of equal thickness or use the CNC machine to traverse the piece of timber.
- The raising and lowering of the table of the drum sander is at a rate of 4 mm per turn. A divider has been set up and the absolute maximum permissible feed is 1/16 of a turn which is 0.25 mm as indicated.
- With the machine still in the off position: Slide in the piece of timber. Whilst looking along the top of the timber wind up the table until a line of light is just visible.
- When commencing operation ensure dust extraction system is switched on either manually or automatically.
- Slide out the piece of timber and turn on the machine.
- Feed the timber in and **VERY SLOWLY** raise the table (turning clockwise). **IMMEDIATELY STOP RAISING THE TABLE AT FIRST SIGN OF CONTACT (on the thickest section if you have permission to run uneven thickness of say 0.5 mm).**
- Feed the timber through without **MAKING ANY FURTHER ADJUSTMENTS**. If the machine starts to remove stock then it is obviously the timber is not flat and/or of equal thickness. Immediately wind down the table (anti-clockwise till only contact occurs).
- Continue and remove the timber. Reinsert the timber and do not make any adjustments whilst the timber is going through.
- Increase the table height by a maximum of 1/16 of a turn.
- Repeat this process until the finish is satisfactory.

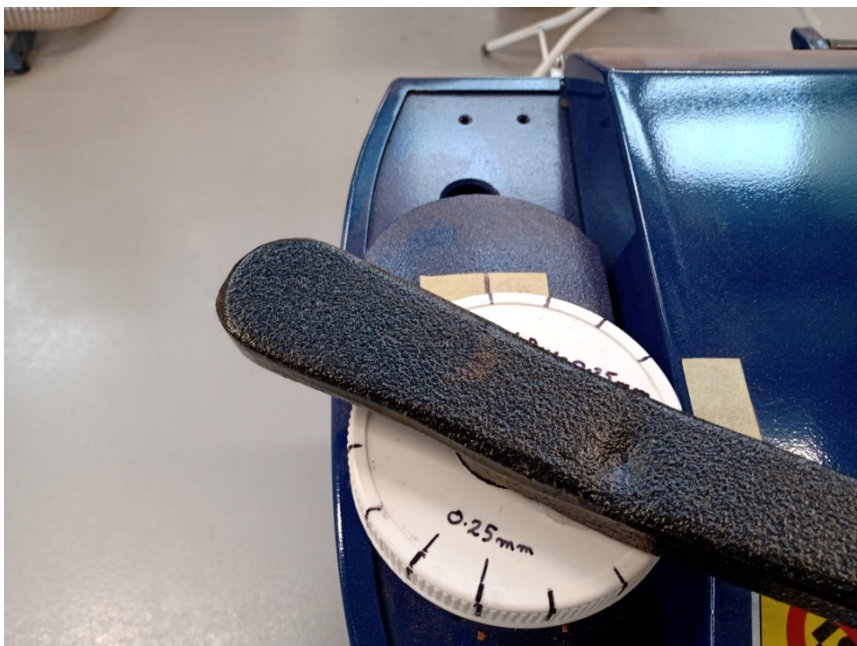
LAKE MONGER COMMUNITY SHED



If the sanding media becomes clogged or needs replacement please liaise with the supervisor as solving these issues are NOT covered in the scope of this procedure



Picture 1 Drum sander power and feed speed controls on the right



Picture 1 Close up of height adjustment lever and dial indicator.